



**BLUE MARBLE
GEOGRAPHICS**

global mapper

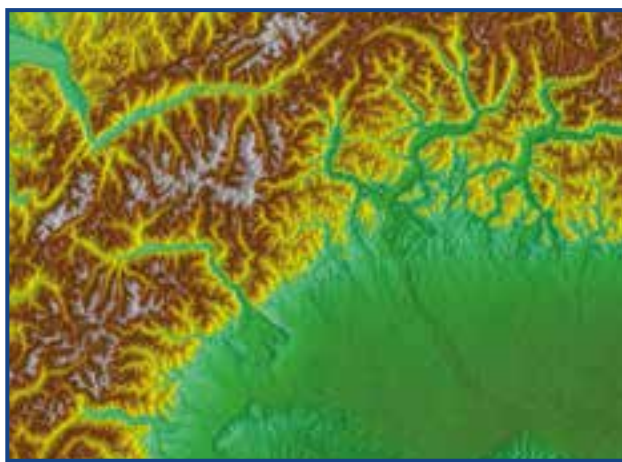
The all-in-one GIS software



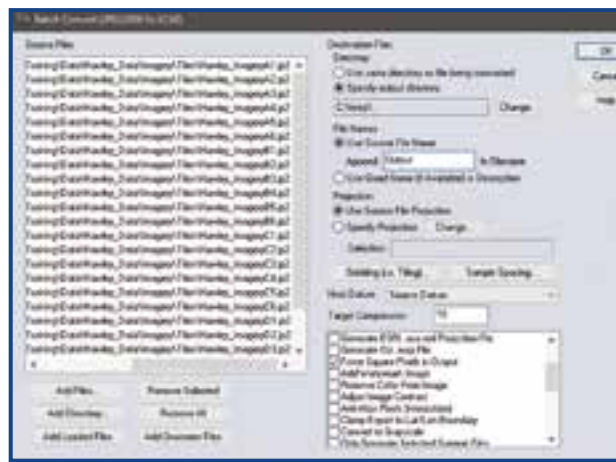
3D Rendering & Analysis
Contour generation, watershed and viewshed modeling, fly-through recording, and more



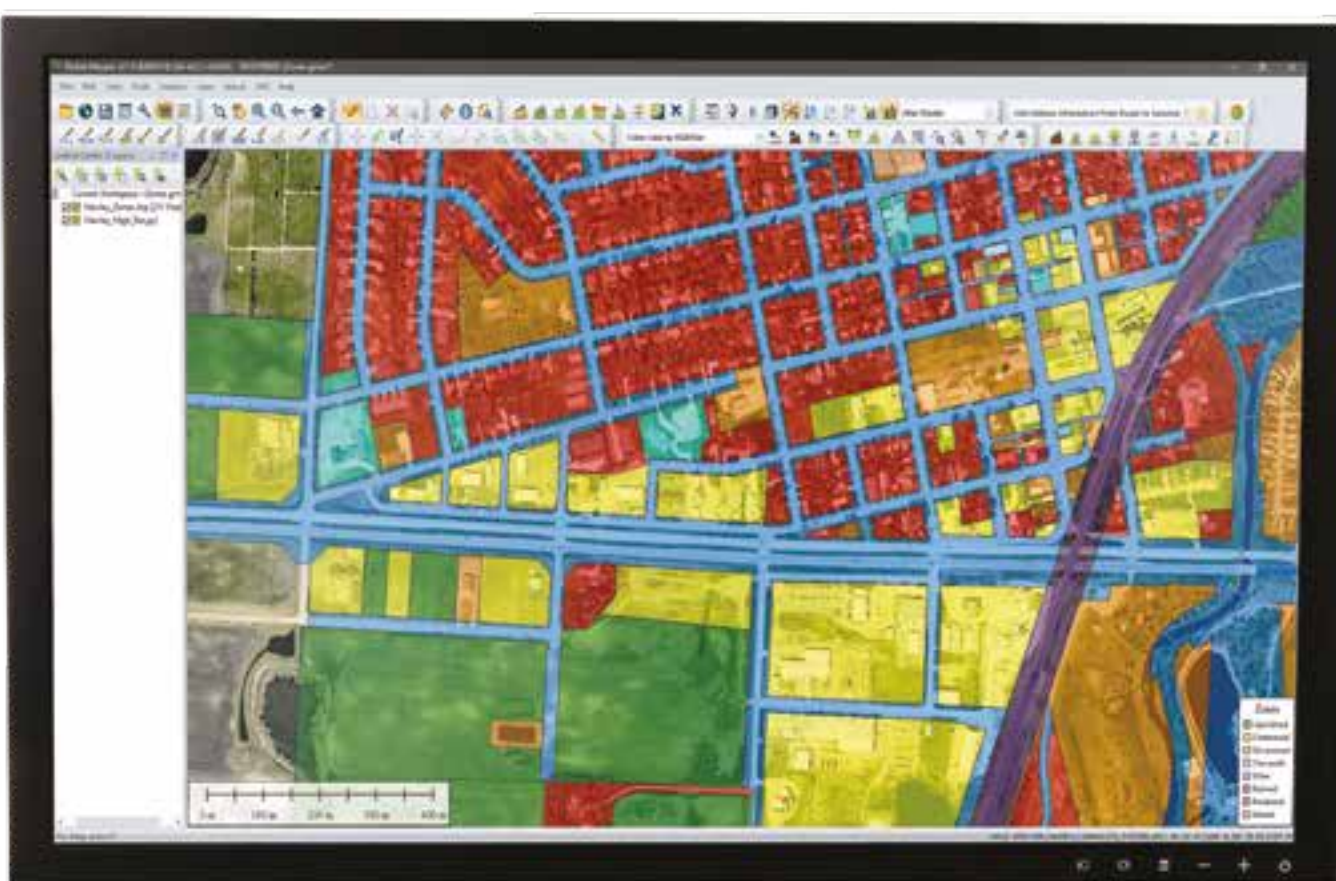
Vector & Raster Tools
Cropping and tiling tools, advanced digitizing tools, attribute management, and more



Built-In Online Data Access
Access to free online services, and ability to add custom data sources



Scripting & Batch Processing
Ability to automate procedures and large volume data conversion



Map Publishing Tools
Map display, publishing, labeling, layout tools, and more

File Format Support
Growing list of more than 300 supported file formats



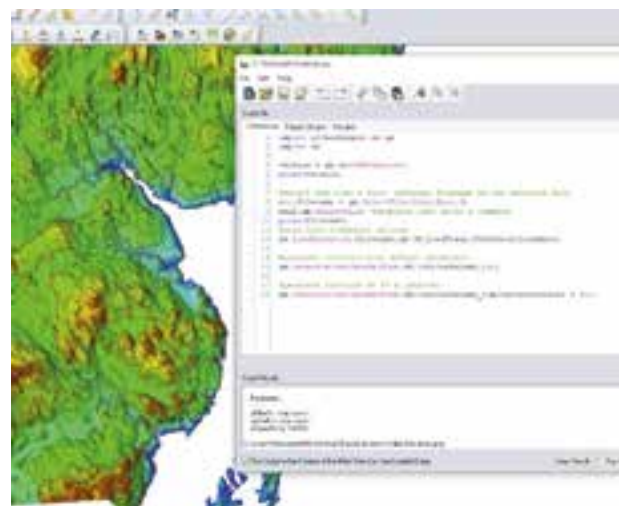
global mapper pro

The all-in-one GIS software



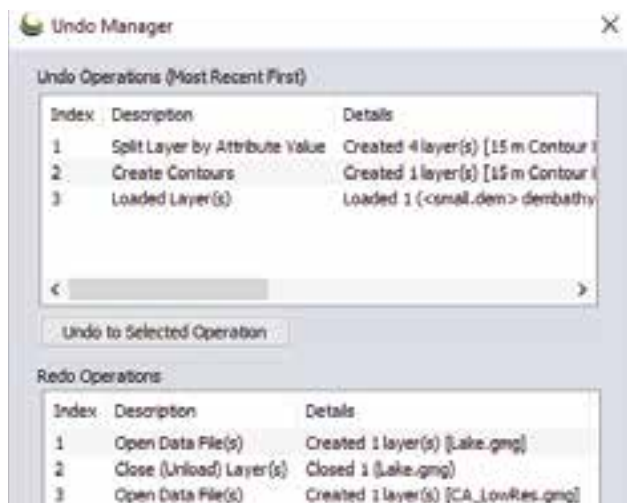
Point Cloud Segmentation by Spectral Graph Partitioning

The Segmentation tool analyzes the characteristics of points in order to identify clusters and apply a Segment ID that can be visualized, searched, and selected.



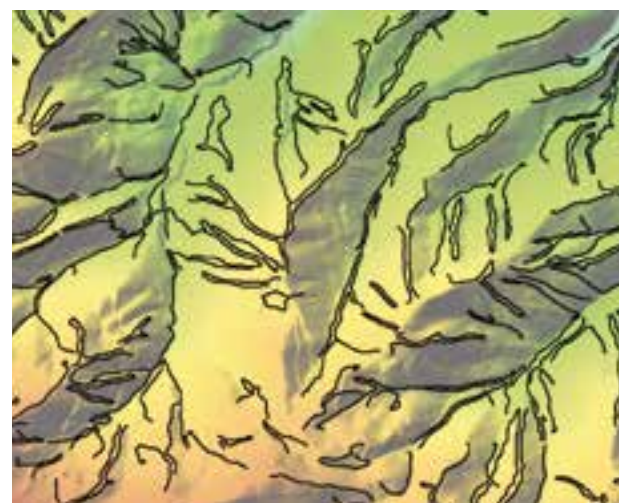
Automate workflows using the Python programming language

Global Mapper users are now able to automate workflows in the program using the Python programming language.



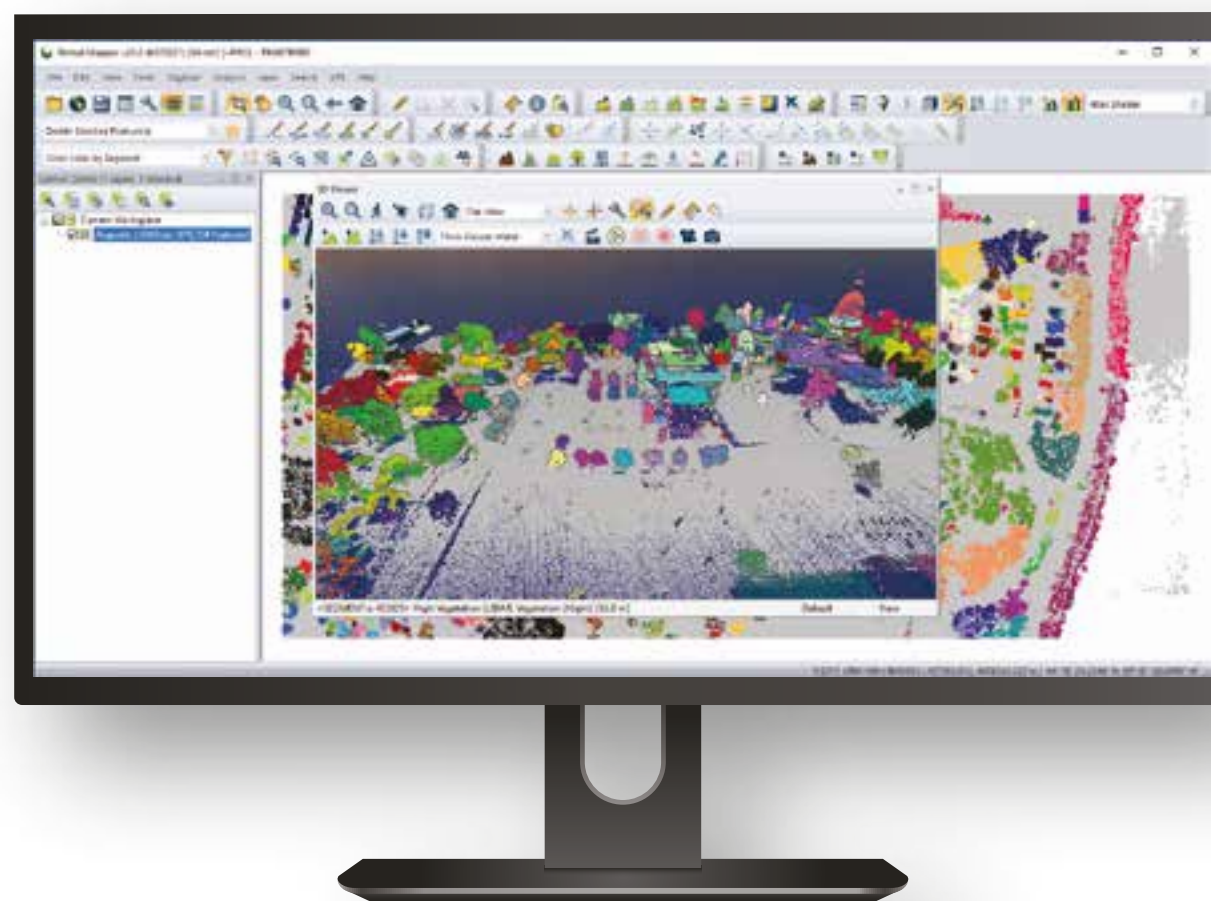
Expanded Undo Capabilities

A customizable undo manager allows the user to specify which actions to record in order to easily return to a previous data state.



Automatic Breakline Creation

The new breakline extraction tool in Global Mapper Pro finds changes in elevation or slope and extracts these edges as 3D vector breaklines.



3D Rendering & Analysis
Contour generation, watershed and viewshed modeling, fly-through recording, and more.

File Format Support
Growing list of more than 300 supported file formats.