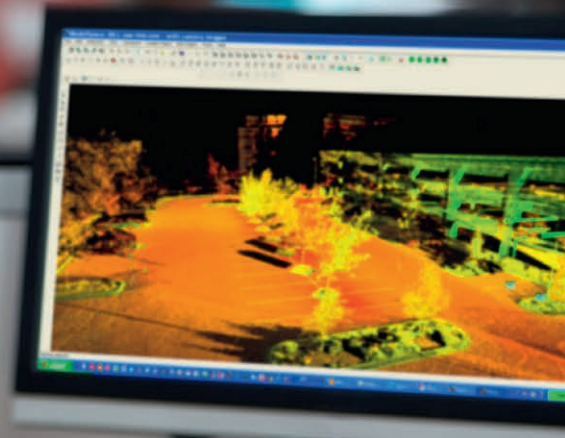


Leica Cyclone IMPORTER 9.0

Data import from third-party laser scanners



The Leica Cyclone IMPORTER software module provides users with optimal office efficiency for working with scan data from third-party scanners within the industry's most popular point cloud software solutions: Cyclone and CloudWorx.

The Leica Geosystems Cyclone and CloudWorx family of software products represent state-of-the-art point cloud processing solutions. While Leica Geosystems also provides the industry's leading laser scanners, some organisations have a need to utilise data from other vendors' scanners, yet still want to take advantage of the capabilities of Leica Geosystems software and prefer to do so in the most efficient way.

In addition to a user's ability to work with any scan data in neutral formats such as ASCII, PTS, PTX, and PTG, Cyclone 9.0 software allows Cyclone and CloudWorx users to work with point cloud data

from third-party scanners in the native data format directly output by these scanners. This capability avoids time-consuming data conversion steps to neutral data formats and it minimises the size of imported files for what are often large data sets.

The ability for Leica Geosystems to provide this native data format import capability from third-party laser scanners is based on direct agreements with scanner manufacturers who want users of their scan data to be able to work efficiently within Cyclone and CloudWorx software.

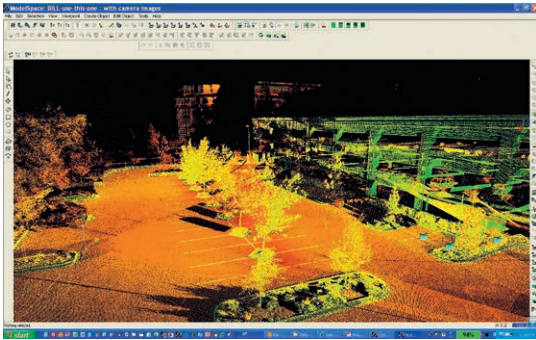
Supported Third-Party 3D Laser Scanner Manufacturers

- Faro
- Riegl
- Optech
- Z+F

- when it has to be **right**

Leica
Geosystems

Leica Cyclone IMPORTER 9.0



Direct importing of data in native format from third-party scanners provides greater office efficiency and versatility for Cyclone and CloudWorx users who need to work with such data.

Native format compatibility with third-party laser scanners

With Leica Cyclone IMPORTER and CloudWorx users can import third-party laser scanners native formats. This allows the full and efficient use of all the valuable Cyclone modules and features such as registration, 3D modeling, data analysis, Cyclone PUBLISHER and TruView, Cyclone II TOPO and all that the Cyclone modules offer.

In addition to individual scans, Cyclone IMPORTER also supports the importation of registration transformations from other vendors. This provides the flexibility to leverage registration work if it has already been done in another scanner manufacturer's software. Therefore, in addition to doing productive work in Cyclone, IMPORTER also supports a workflow where users can do most of the work in a third-party system and simply use IMPORTER to bring the data into Cyclone format for delivery to a customer or to comply with contractual delivery specifications.

In addition to its direct importing features, Leica Cyclone IMPORTER also supports a vast array of the standard visualisation features of Cyclone so it can be used in a standalone manner. Users can browse the imported data visually. IMPORTER also supports a long list of other important project data formats, such as BMP, JPG, LandXML and others.

Leica Cyclone IMPORTER Specifications*		Hardware and System Requirements
Visualisation	Full 3D fly, pan, zoom, rotate. Control colour mapping using intensity, true-colour, gray scale, colour by elevation	Minimum Specifications
Import	Data from CAD via COE (Cyclone Object Exchange)	Processor: 2 GHz Dual Core processor or better
	Control data from ASCII formats & X-Function DBX	RAM: 2 GB (4 GB for Windows Vista or Windows 7)
	FARO:FLS and FWS	Hard Disk: 40 GB
	Optech: IXF	Display: SVGA or OpenGL accelerated graphics card (with latest drivers)
	RIEGL: 3DD and RSP	Supported operating systems: Windows XP (SP2 or higher) (32 or 64)***, Microsoft Vista** ***, Windows 7 (32 or 64), or Windows 8 & 8.1 (64bit only)
	ZFC, ZFS, SCAN, SC2, C10/P20 Project, MS50 HeXML	File System: NTFS
	BMP, TIFF, JPEG, PNG	Recommended Specifications
	LandXML, SIMA	Processor: 3.0 GHz Quad Core w/ Hyper-threading or higher
	LAS & E57	RAM: 32 GB's or more 64 bit OS
		Hard disk: 500 GB SSD Drive
		Large project disk option: RAID 5, 6, or 10 w/ SATA or SAS drives
		Display: Nvidia GeForce 680 or ATI 7850 or better, with 2 GB's memory or more
		Operating system: Microsoft Windows 7 – 64bit
		File system: NTFS

Windows is a registered trademark of Microsoft Corporation. Other trademarks and trade names are those of their respective owners.

Illustrations, descriptions and technical data are not binding. All rights reserved. Printed in Switzerland – Copyright Leica Geosystems AG, Heerbrugg, Switzerland, 2014. 767659en – 08.14 – galledia

* Reference the Leica Cyclone 9.0 Technical Specifications document for a complete listing of product specifications.

** Some systems may not support Windows Vista's Desktop Windows Manager (DWM) with Leica Cyclone and must be operated in Windows Classic Look.

*** Can only borrow or be a floating license client.